





3rd Annual Westmead Endoscopy Symposium

Thursday 4th & Friday 5th, March 2010
Westmead Hospital Sydney
Australia

CONFERENCE PROGRAM

INTERNATIONAL FACULTY:

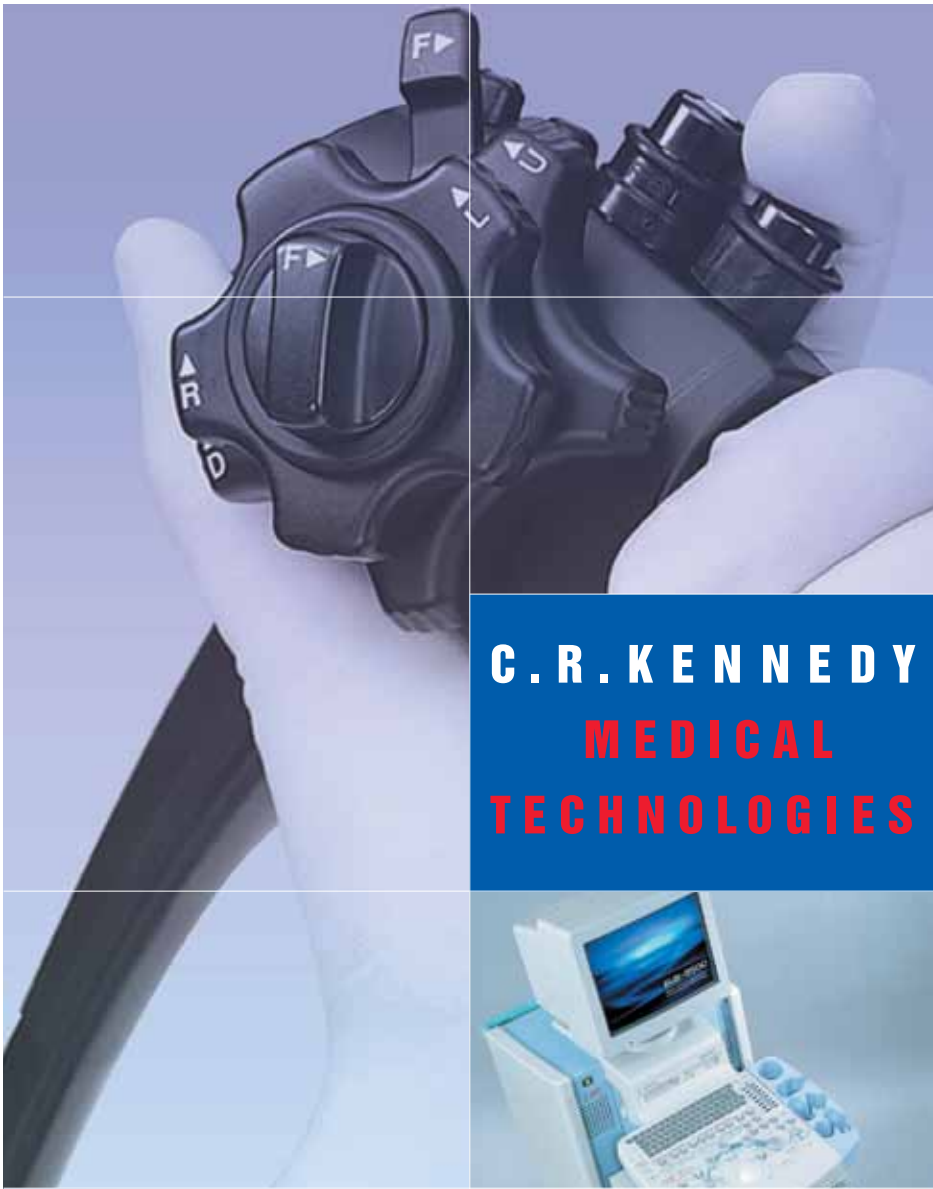
-  Chris Dietrich, Mergentheim
-  Nageshwar Reddy, Hyderabad
-  Yutaka Saito, Tokyo
-  Pete Stevens, New York

AUSTRALIAN FACULTY:

- Robyn Ward, NSW
- Luke Hourigan, QLD
- Gregor Brown, VIC

Topics:

- Barrett's Oesophagus
 - Detection of inconspicuous neoplasia and dysplasia
 - Total mucosectomy
 - Radio-frequency ablation
- Enhanced endoscopic imaging modalities
- Advanced colonoscopy/complex polypectomy and mucosectomy
- Endoscopic palliation of malignancy
- Diagnostic and interventional endoscopic ultrasound
- ERCP: complex and basic therapeutics
- Direct cholangioscopy
- Pseudocyst drainage and endoscopic necrosectomy
- Balloon and capsule enteroscopy



**C. R. KENNEDY
MEDICAL
TECHNOLOGIES**



PENTAX®



Gold Sponsor Westmead Endoscopy Symposium and suppliers of:

- Pentax Endoscopes & Accessories.
- Medivators Endoscope Disinfectors.
- Symbionix GI Mentor.
- Hitachi Pentax Ultrasound System.
- Microline Pentax Laparoscopic Instrumentation.

We provide a Total Solution including:

- Loan scopes.
- On-site service.
- Equipment demonstrations.
- In-servicing & education.

For further information please contact:

VICTORIA & TASMANIA.

Phone 03 9823 1577 Fax 03 9827 7216
vicmedical@crkennedy.com.au

NEW SOUTH WALES.

Phone 02 9552 8380 Fax 02 9552 8389
nswmedical@crkennedy.com.au

QUEENSLAND.

Phone 07 3632 6717 Fax 07 3632 6718
qldmedical@crkennedy.com.au

SOUTH AUSTRALIA & NT.

Phone 08 8410 8105 Fax 08 8410 1370
samedical@crkennedy.com.au

WESTERN AUSTRALIA.

Phone 08 9489 8545 Fax 08 9381 7344
wamedical@crkennedy.com.au

www.crkennedy.com.au





Welcome

Dear Colleagues, Ladies and Gentlemen

It is my great pleasure to welcome you to the 3rd Annual Westmead Endoscopy Symposium.

Once again we have set ourselves the goal of a comprehensive demonstration of diagnostic and therapeutic endoscopy.

The last few years have seen advances in Endoscopy that could scarcely have been imagined a decade ago and the speed of innovation continues at a pace not previously witnessed. Our program will aim to highlight these progressions in addition to the core fundamentals of good endoscopic practice.

The symposium's content has been carefully designed and the cases judiciously selected to facilitate discussion around critical aspects of technique and points of controversy. A strong focus on the cognitive processes behind the delivery of high quality endoscopy will also feature. We encourage you to relay your questions through the panel to the proceduralist. Our invited experts are all internationally renowned authorities and their responses to your questions and comments will enhance the meeting for you and your colleagues.

Finally, on behalf of our Department, Nurses and Doctors alike, I thank you for your support and interest and for taking the time from your busy schedules to join us here for these two special days. The international guests, in combination with our Australian faculty and the team from Westmead, will I believe provide an enlightening and informative educational experience for you, and hopefully a very enjoyable one.

Yours Sincerely

Michael Bourke

Chairman Organising Committee
Westmead Endoscopy Symposium 2010

The attendance of the international faculty has been graciously supported by our Gold Sponsors



International Faculty



PROF CHRISTOPH DIETRICH, Head of the Medical Department 2, Caritas-Hospital Bad Mergentheim, Germany

Professor Dr Christoph F Dietrich is the chief of the Medical Department 2 (Caritas - Krankenhaus Bad Mergentheim, Germany). He graduated from the Medizinische Hochschule Hannover (MHH). His medical education included studies in New York, USA, Montpellier, France and Sevilla, Spain. He is specialised in Internal Medicine, Gastroenterology (Fellow of the European Board of Gastroenterology) and Hematology & Oncology. Dr Dietrich has keen interest in gastrointestinal and liver diseases, including interventional endoscopic ultrasound and has published numerous scientific papers. He is also editor of several medical textbooks as well as the Honorary Secretary of EFSUMB (European Federation of Societies for Ultrasound in Medicine and Biology).



DR NAGESHWAR REDDY, Chairman, Asian Institute of Gastroenterology, Hyderabad, India

Dr D Nageshwar Reddy is currently the Chairman of the Asian Institute of Gastroenterology, Hyderabad, India. He graduated from Kurnool Medical College obtaining internal medicine, Masters in Madras Medical College and D.M in Gastroenterology from PGIMER, Chandigarh. His main areas of research interest is in G.I. Endoscopy particularly in Therapeutic Pancreatic Biliary Endoscopy and Innovations in Transgastric Endoscopic Surgery.



DR YUTAKA SAITO, Endoscopy Division, National Cancer Centre Hospital, Tokyo, Japan

Dr Yutaka Saito is a leading member of the consultant staff at the national cancer centre in Tokyo. His clinical and research interests focus on techniques for the diagnosis and therapy of mucosal malignancy in the upper and lower digestive tract. He has been one of the pioneers in developing the techniques of submucosal dissection. He is frequently invited to demonstrate and lecture at international endoscopy symposia.



DR PETE STEVENS, Director of Endoscopy, New York Presbyterian Hospital - Columbia Campus, USA

Peter D Stevens, MD is Director of Endoscopy at New York Presbyterian Hospital - Columbia Campus. He is Associate Professor of Clinical Medicine in the College of Physicians and Surgeons, Chief of the Interventional Endoscopy Service in the Division of Digestive and Liver Diseases, and Endoscopic Program Director in the Pancreas Center at Columbia University Medical Center. Dr Stevens is principle investigator for several clinical trials to advance the use of endoscopic approaches to diagnostic and therapeutic challenges. His current research interests include the use of novel intraductal endoscopy techniques within the pancreaticobiliary tree, the use of EUS to screen high risk patients for pancreatic cancer, and developing techniques for endoluminal surgery and natural orifice transluminal endoscopic surgery.

Welcome to Nurses

It is my great pleasure to welcome you to the 2010 Westmead Endoscopy Symposium Nurses Workshop. This workshop will compliment the subsequent two days live workshop, which will demonstrate some new and exciting techniques in gastrointestinal endoscopy.

The nursing workshop will provide a comprehensive coverage of the multidisciplinary management of patients undergoing routine and advanced Endoscopy both in the elective and emergency setting.

The key areas of focus will be on oesophagus, Barrett's & associated strictures, pancreas, role of endoscopic ultrasound, pseudocyst and FNA, reprocessing, sedation, recovery and discharge and Nurse and Endoscopist expectations of each other.

All presentations will be given during the first session before tea followed by 2 hours of hands on demonstration of equipment.

We hope you enjoy the workshop and welcome those that are staying for the full two day live symposium with some of the worlds leading Endoscopists demonstrating their skill and new advances in endoscopy.

Yours sincerely

Mary Bong

Nurse Unit Manager, The Endoscopy Unit, Westmead Hospital
Organising Committee Westmead Endoscopy Symposium 2010

Nurses Workshop - Wednesday 3 March 2010				
0715	Coaches will depart promptly from the 'lower ground floor' of the Four Points by Sheraton Hotel. Please be waiting 10 minutes prior to departure.			
0800	Registration Opens			
0830 - 0840	Welcome by Mary Bong - Venue: Loewenthal Auditorium			
0840 - 0905	Oesophagus: Barrett's, strictures and what else? Presenters: Betty Lo, Helna Lindhout, Adeyemi Adenike			
0905 - 0930	Pancreas: The role of EUS, Pseudocyst, FNA. Presenters: Kwok Siu Wa, Sandra Ko, Su Wang			
0930 - 0955	Reprocessing has been reprocessed? Presenter: Robyn Brown			
0955 - 1020	Sedation, recovery and discharge. Presenters: Judy Tighe-Foster, Susan Lane, Rachel Perram			
1020 - 1030	Discussion			
1030 - 1100	Morning Tea - Venue: Loewenthal Auditorium Crush Area			
Floor Co-ordinator and Photographer: Mark Brook , Equipment Co-ordinator: Kerry Flew * please remain with your allocated group for the entire morning				
	GROUP 1	GROUP 2	GROUP 3	GROUP 4
1100 - 1125	Sedation, recovery and discharge. Demonstrators: Judy Tighe-Foster, Janice Waru, Susan Lane, Rachel Perram, Julie Brown, Crystal Schumacher, Cassandra Smith Venue: Lecture Theatre 4	Pancreas: The role of EUS, Pseudocyst, FNA. Demonstrators: Sandra Ko, Kwok Siu Wa, Su Wang, Dr Alan Moss Venue: Seminar Room 2	Reprocessing has been reprocessed? Demonstrators: Robyn Brown, Karuna Kisun, Ewa Kasprzak-Adamecki, Jimmy Ng Venue: Seminar Room 3	Oesophagus: Barrett's, strictures and what else? Demonstrators: Helna Lindhout, Betty Lo, Adeyemi Adenike, Amelia Tam Venue: Seminar Room 4
1130 - 1155	Pancreas: The role of EUS, Pseudocyst, FNA. Demonstrators: Sandra Ko, Kwok Siu Wa, Su Wang, Dr Alan Moss Venue: Seminar Room 2	Reprocessing has been reprocessed? Demonstrators: Robyn Brown, Karuna Kisun, Ewa Kasprzak-Adamecki, Jimmy Ng Venue: Seminar Room 3	Oesophagus: Barrett's, strictures and what else? Demonstrators: Helna Lindhout, Betty Lo, Adeyemi Adenike, Amelia Tam Venue: Seminar Room 4	Sedation, recovery and discharge. Demonstrators: Judy Tighe-Foster, Janice Waru, Susan Lane, Rachel Perram, Julie Brown, Crystal Schumacher, Cassandra Smith Venue: Lecture Theatre 4
1200 - 1225	Reprocessing has been reprocessed? Demonstrators: Robyn Brown, Karuna Kisun, Ewa Kasprzak-Adamecki, Jimmy Ng Venue: Seminar Room 3	Oesophagus: Barrett's, strictures and what else? Demonstrators: Helna Lindhout, Betty Lo, Adeyemi Adenike, Amelia Tam Venue: Seminar Room 4	Sedation, recovery and discharge. Demonstrators: Judy Tighe-Foster, Janice Waru, Susan Lane, Rachel Perram, Julie Brown, Crystal Schumacher, Cassandra Smith Venue: Lecture Theatre 4	Pancreas: The role of EUS, Pseudocyst, FNA. Demonstrators: Sandra Ko, Kwok Siu Wa, Su Wang, Dr Alan Moss Venue: Seminar Room 2
1230 - 1300	Oesophagus: Barrett's, strictures and what else? Demonstrators: Helna Lindhout, Betty Lo, Adeyemi Adenike, Amelia Tam Venue: Seminar Room 4	Sedation, recovery and discharge. Demonstrators: Judy Tighe-Foster, Janice Waru, Susan Lane, Rachel Perram, Julie Brown, Crystal Schumacher, Cassandra Smith Venue: Lecture Theatre 4	Pancreas: The role of EUS, Pseudocyst, FNA. Demonstrators: Sandra Ko, Kwok Siu Wa, Su Wang, Dr Alan Moss Venue: Seminar Room 2	Reprocessing has been reprocessed? Demonstrators: Robyn Brown, Karuna Kisun, Ewa Kasprzak-Adamecki, Jimmy Ng Venue: Seminar Room 3
1300 - 1400	Lunch - Venue : Loewenthal Auditorium Crush Area			
1325 - 1400	Endoscopy unit tours depart the registration desk (pre-booked)			
1400 - 1415	Quiz - Quizmaster: Mary Bong, Venue: Loewenthal Auditorium			
1415 - 1500	What the Nurse wants from the Endoscopist: What the Endoscopist hopes for from the Nurse? Presenters: Dr Stephen Williams, Nicky Stojanovic			
1500 - 1505	Quiz prizes presentation			
1510 - 1530	Afternoon Tea - Venue: Loewenthal Auditorium Crush Area			
1545	Coaches will depart promptly from outside the Millennium Foundation (drop off point in the morning) enroute for the Four Points by Sheraton Hotel.			



**Delivering proven stent solutions for you.
Expanding treatment options for your patients.**



For more than two decades.

Each year, physicians worldwide place approximately 100,000 Boston Scientific self-expanding GI stents, including the WALLSTENT™ Endoprosthesis, Ultraflex™ Stent and our newest technology, the WallFlex™ Stent. These are stents you know and trust, cited in hundreds of journal articles and chosen by you for their clinical efficacy and consistent performance. Every day, our field representatives work with your clinical teams, sharing their knowledge and experience and providing hands-on training and support. Yesterday, today and tomorrow – we continue to advance stent technologies that make more treatment options possible and improve patient care.

www.bostonscientific-international.com

The law restricts these devices to sale by or on the order of a physician. Indications, contraindications, warnings and instructions for use can be found in the product labelling supplied with each device.

Copyright © 2009 by Boston Scientific Corporation or its affiliates.
All rights reserved. Data on file Boston Scientific Corporation. PSST 5325

**Boston
Scientific**
Delivering what's next.™



NBI

OLYMPUS
EndoTherapy
BEYOND THE SCOPE

EndoCapsule

OLYMPUS

SYSTEM

Enteropro

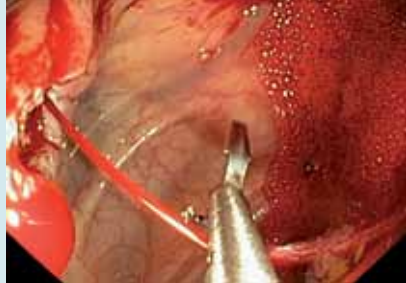
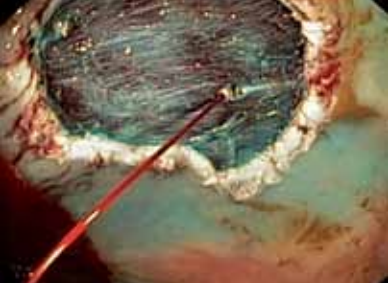
Olympus leading edge **Endoscopy** products
and **EndoTherapy** Accessories can offer you

THE TOTAL SOLUTION

Visit our staff at the Olympus stand for further information
on our products and for your chance to WIN a great prize.

OLYMPUS[®]
Your Vision, Our Future

Customer Service Centre: 1300 132 992



Symposium Program

Day One - Thursday 4 March 2010

0715	Coaches will depart promptly from the 'lower ground floor' of the Four Points by Sheraton Hotel. Please be waiting 10 minutes prior to departure.
0730	<i>Registration Opens</i> Venue: Loewenthal Auditorium Crush Area
0830 - 0832	<i>Welcome</i> Michael Bourke, Director, Gastrointestinal Endoscopy, Westmead Hospital
0832 - 0835	<i>Official Symposium Opening</i> Steven Boyages, Chief Executive Officer, SWAHS
0835 - 0900	<i>Definitive characterisation of hepatic and pancreatic tumours by contrast enhanced ultrasound.</i> Christoph Dietrich, Head of the Medical Department 2, Caritas-Hospital Bad Mergentheim, Germany
0900 - 1030	<i>Live Endoscopy 1</i> - Chairs: I Norton, M Appleyard, S Williams
1030 - 1100	Morning Tea - Venue: Loewenthal Auditorium Crush Area
1100 - 1120	<i>Endoscopic therapy for obesity: Has it arrived?</i> Pete Stevens, Director of Endoscopy, New York Presbyterian Hospital - Columbia Campus, USA
1120 - 1300	<i>Live Endoscopy 2</i> - Chairs: A Kaffes, S Ding, R Lin
1300 - 1400	Lunch - Venue: Loewenthal Auditorium Crush Area
1325 - 1400	Endoscopy unit tours depart the registration desk (pre-booked)
1400 - 1530	<i>Live Endoscopy 3</i> - Chairs: R Singh, I Norton, R Hope
1530 - 1600	Afternoon Tea - Venue: Loewenthal Auditorium Crush Area
1600 - 1630	<i>Detection, classification and treatment of colonic neoplastic lesions in Japan: Insights for Western Endoscopists.</i> Yutaka Saito, National Cancer Care Hospital, Tokyo, Japan
1630 - 1655	<i>General Endoscopy Quiz</i> - Alan Moss
1700	<i>Symposium Close</i> - Stephen Williams Coaches will depart promptly from outside the Millennium Foundation (drop off point in the morning) enroute for the Four Points by Sheraton Hotel
1900	<i>Symposium Dinner</i> (by pre-registration only - see below) <i>Special lecture during dinner!</i> Dr Nageshwar Reddy, will present "My Journey" – establishing gastroenterological services in India: Fulfilling basic needs and providing advanced care.

OFFICIAL SYMPOSIUM DINNER



The Malaya Restaurant, 93 Lime Street, King Street Wharf

Please make your own way to the restaurant. Just a short walk from The Four Points by Sheraton

Thursday 4 March 7.00pm onwards



**Reason to
celebrate**



Power to resolve[§] **Nexium**[®]
esomeprazole



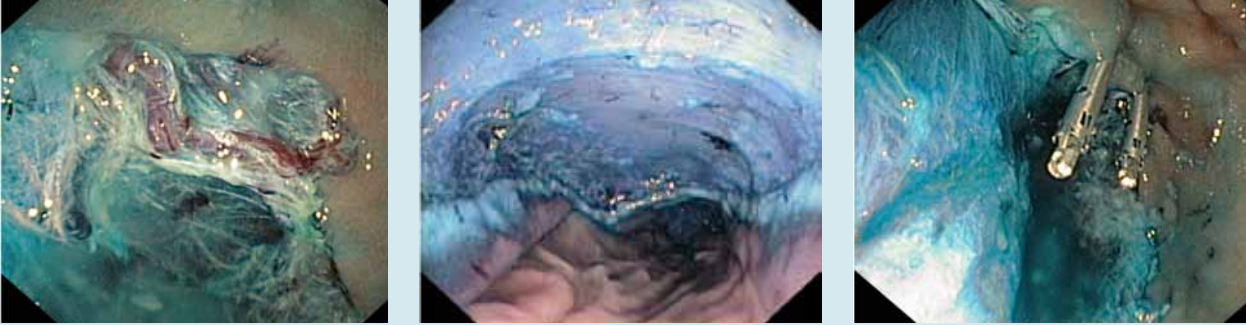
§Heartburn and regurgitation symptoms associated with gastro-oesophageal reflux disease.¹

Please review Product Information before prescribing. Full Product Information is available on request from AstraZeneca.

Nexium[®] (esomeprazole magnesium trihydrate). Indications and dosage. Adults and Children ≥ 12 years: Treatment of erosive reflux oesophagitis: 40 mg once daily for 4 or 8 weeks. Long-term management of patients with healed oesophagitis to prevent relapse: 20 mg once daily. Symptomatic treatment of gastro-oesophageal reflux disease (GORD) in patients without oesophagitis: 20 mg once daily for 4 weeks. Other indications/dosage in adults: Patients requiring NSAID therapy: Prevention of gastric and duodenal ulcers associated with NSAID therapy: 20 mg once daily. Short-term treatment of upper GI symptoms associated with NSAID therapy: 20 mg once daily. Healing of gastric ulcers associated with NSAID therapy: 20 mg once daily for 4 to 8 weeks. *Prevention of rebleeding of gastric or duodenal ulcers following treatment with NEXIUM IV solution by intravenous infusion: 40 mg orally once daily, duration determined by physician. Healing of duodenal ulcer associated with *H. pylori* or eradication of *H. pylori* with active or healed peptic ulceration: Nexium 20 mg used in combination with 1000 mg amoxicillin and 500 mg clarithromycin, twice daily for 7 days. Pathological hypersecretory conditions including Zollinger-Ellison syndrome and idiopathic hypersecretion: 40 mg twice daily initially and may be increased. *Children 1-11 years: Treatment of erosive reflux oesophagitis: weight < 20 kg: 10 mg once daily for 8 weeks; weight ≥ 20 kg, 10 mg or 20 mg once daily for 8 weeks. Long-term management of patients with healed oesophagitis to prevent relapse: 10 mg once daily. Symptomatic treatment of gastro-oesophageal reflux disease (GORD): 10 mg once daily for up to 8 weeks. Contraindications: Hypersensitivity to esomeprazole, substituted benzimidazoles or other constituents of Nexium; *concomitant administration with atazanavir or clobazam. Precautions: *Increased GI infections, hepatic insufficiency; renal impairment; pregnancy; lactation; interactions with other medicines; exclude malignancy. Interactions: Clarithromycin, cisapride, *clobazam, citalopram, clomipramine, imipramine, diazepam, phenytoin, warfarin, antiretroviral drugs (*contraindicated with atazanavir; not recommended with nelfinavir); *drugs with pH dependent absorption; others see full PI. Adverse Reactions (common): GI upset, headache. For less common adverse reactions see full PI. Presentations: Tablets: 20 mg and 40 mg; Unit dose sachets containing 10 mg granules for oral suspension. Date of TGA approval: 7 September 2009. Date of most recent amendment: 25 September 2009. PBS dispensed price: 40 mg (30) \$58.67; 20 mg (30) \$38.54. Reference. 1. Nexium Approved Product Information 7 September 2009. AstraZeneca Pty Ltd. ABN 54 009 682 311. Alma Road, North Ryde NSW 2113. Trademarks herein are the property of the AstraZeneca Group. 2/10 NEX000050r AST2122/CJB AZAE0311

*Please note changes in Product Information.

PBS Information: Nexium 40 mg. Restricted Benefit. Healing of gastro-oesophageal reflux disease.
Nexium 20 mg. Restricted Benefit. Maintenance of healed gastro-oesophageal reflux disease.
Nexium 10 mg sachets are not listed on the PBS.



Symposium Program

Day Two - Friday 5 March 2010	
0715	Coaches will depart promptly from the 'lower ground floor' of the Four Points by Sheraton Hotel. Please be waiting 10 minutes prior to departure.
0730	<i>Registration Opens</i>
0830 - 0850	<i>The Molecular Alphabet of Colorectal Neoplasia: SSAS, LSTs and other TLAS.</i> Robyn Ward, Clinical Associate Dean, Prince of Wales Clinical School, University of NSW
0900 - 1030	<i>Live Endoscopy 4</i> - Chairs: P Craig, W Tam, D Ruppin
1030 - 1100	Morning Tea - Venue: Loewenthal Auditorium Crush Area
1100 - 1115	<i>Pancreatic cancer screening in high risk individuals - Can we help?</i> Pete Stevens, Director of Endoscopy, New York Presbyterian Hospital - Columbia Campus, USA
1115 - 1300	<i>Live Endoscopy 5</i> - Chairs: B Jones, D van der Poorten, D Samarasinghe
1300 - 1400	Lunch - Venue: Loewenthal Auditorium Crush Area
1325 - 1400	Endoscopy unit tours depart the registration desk (pre-booked)
1400 - 1530	<i>Live Endoscopy 6</i> - Chairs: R Vaughan, M Appleyard, N Phung
1530 - 1600	Afternoon Tea - Venue: Loewenthal Auditorium Crush Area
1600 - 1630	<i>The Peter Gillespie Lecture: The Changing Face of GI Endoscopy in 2010</i> Nageshwar Reddy, Chairman, Asian Institute of Gastroenterology, Hyderabad, India
1630 - 1645	<i>Quiz answers and awards for winners</i> Stephen Williams and Alan Moss
1645	<i>Symposium Close, meeting adjourned</i> Michael Bourke
1700	Separate coaches will depart promptly from outside the Millennium Foundation (drop off point in the morning) enroute for the Four Points by Sheraton Hotel and Sydney domestic and international airports

Mark your diary NOW,
next year's Symposium dates!
Wednesday 2 - Friday 4 March, 2011

March 2011

S	M	T	W	T	F	S
		1	2	3	4	5
6	7	8	9	10	11	12
13	14	15	16	17	18	19
20	21	22	23	24	25	26
27	28	29	30			



Evolution[®]

CONTROLLED-RELEASE STENT

**ESOPHAGEAL, DUODENAL AND COLONIC
SELF EXPANDING METAL STENT**



**More Control,
Less Stress.**

Visit the **Cook Medical** stand to find out more.

A SINCERE THANK YOU IS EXTENDED TO THE FOLLOWING COLLEAGUES:

Westmead Nursing Staff

Mary Bong, ANUM	Janice Waru, RN
Robyn Brown, CNE	Mark Brook, RN
Judy Tighe Foster, CNS	Su Wang, RN
Kerry Flew, CNS	Julie Brown, RN
Adeyemi Adenike, RN	Nicky Stojanovic, RN
Jeneviah, Junio, RN	Amelia Tam, RN
Sandra Ko, RN	Suzy Duffie, EN
Susan Lane, RN	Rachel Perram, EEN
Polly Leong, RN	Crystal Schumacher, EEN
Helna Lindhout, RN	Julie Hook, EEN
Betty Lo, RN	Ewa Kasprzak-Adamecki, ST
Kwok Siu, RN	Karuna Kisun, ST

Westmead Consultant Endoscopists

Dr Michael Bourke	Dr David Williams
Dr Stephen Williams	Dr Nghi Phung
Dr David Ruppin	Dr Rick Hope
Dr Rita Lin	Dr Dev. Samarasinghe
Dr Vu Kwan	Dr David Van der Poorten

Westmead Medical Production and Co-ordination

Dr Scott Fanning	Dr Adrian Chung
Dr Viraj Kariyawasam	Dr Rosyln Vongsuvan
Dr Badre Alam	Dr Eric Lee
Dr Alan Moss	Dr Mahendra Naidoo

Sydney West Area Health Service Audio Visual Production Team

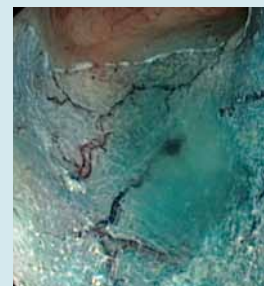
Glenn Munro, Director	Chris Henwood
Lesia Posa	Terry Lawrie
Phillip Edwards	Simon Davies
Alan Smedley	

Westmead Endoscopy Clerical Support Team

Ramona Galea	Shamim Ara
Lyn Mitchell	Amy Kenane
Emily Touma	Tiffany Moyle

Special thanks to:

Westmead Department of Anaesthetics – Professor Peter Klineberg and Dr Susan Voss
Georgette Hanna – Executive Officer Westmead Association



Westmead Endoscopy would like to thank our sponsors:

GOLD SPONSORS



SILVER SPONSORS



BRONZE SPONSORS



Symposium Organiser and Secretariat

For further information please contact
e-Kiddna Event Management
Ph +61 7 3893 1988
Fax +61 7 3337 9855
email: rsvp@e-Kiddna.com.au



Attendance Verification: A Certificate of Attendance will be available from the Registration Desk upon request.

Disclaimer: Information contained in this brochure was correct at the time of publication. However, it may be necessary, due to unforeseen circumstances for sections to be changed. The organisers will endeavour to keep changes to a minimum.